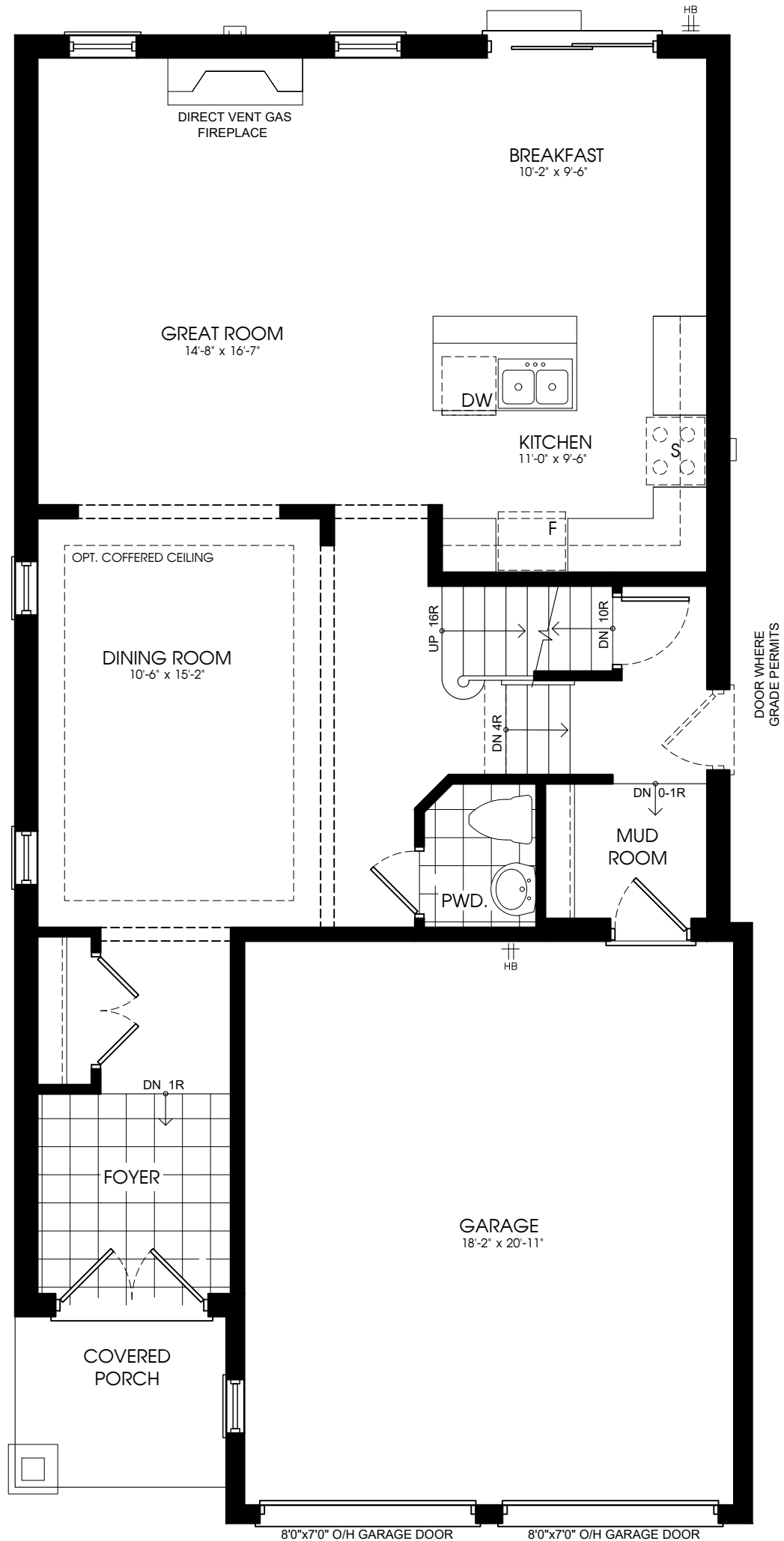


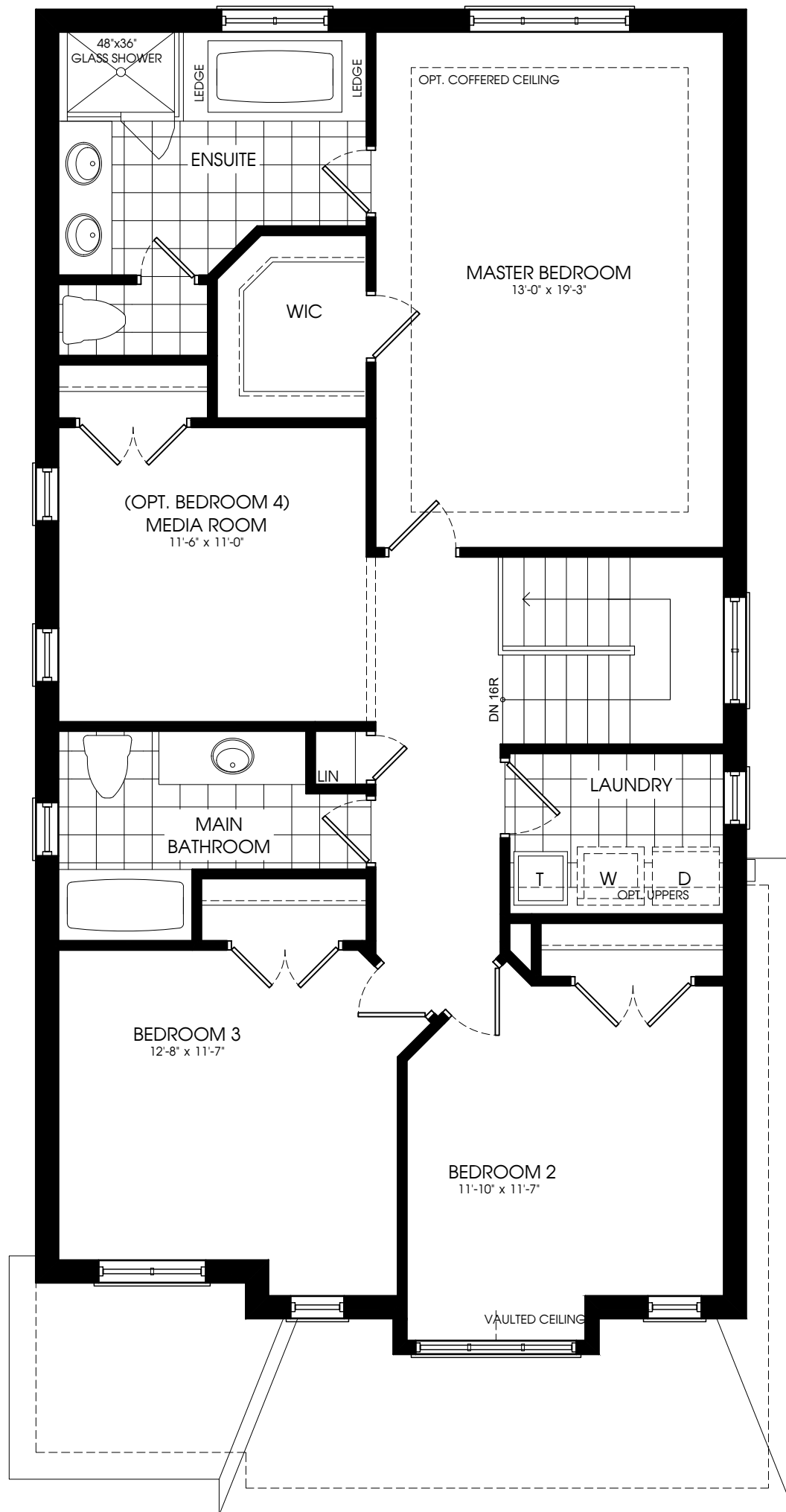
BASEMENT FLOOR PLAN ELEVS 'A', 'B', & 'C'

3/16" = 1'-0"



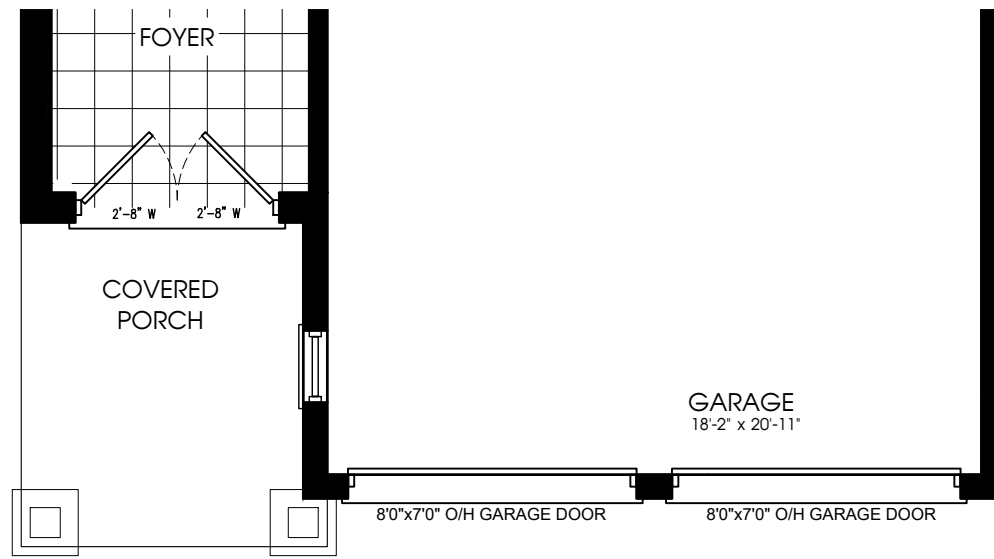
GROUND FLOOR PLAN ELEVATION 'A'

3/16" = 1'-0"



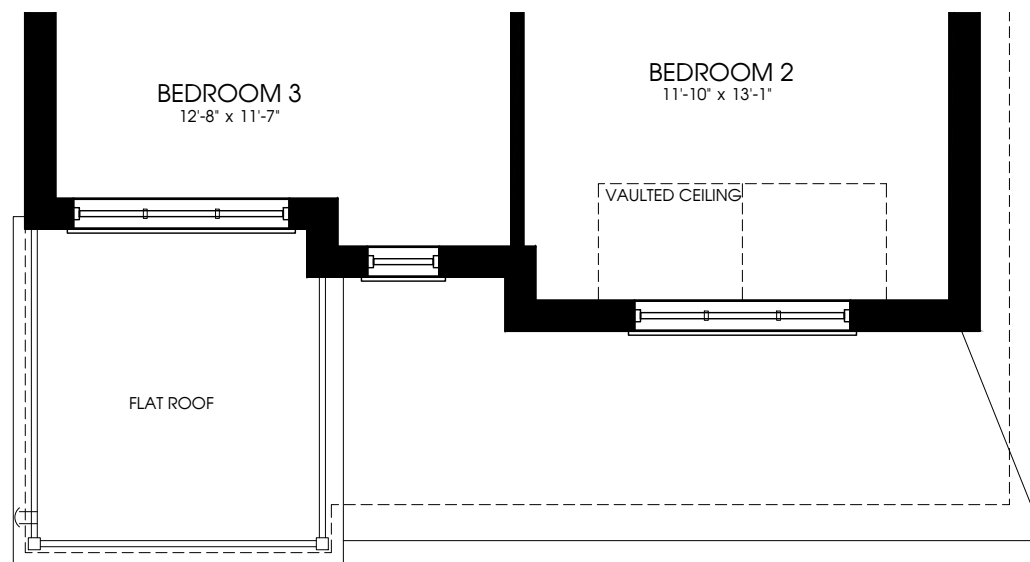
SECOND FLOOR PLAN ELEVATION 'A'

3/16" = 1'-0"



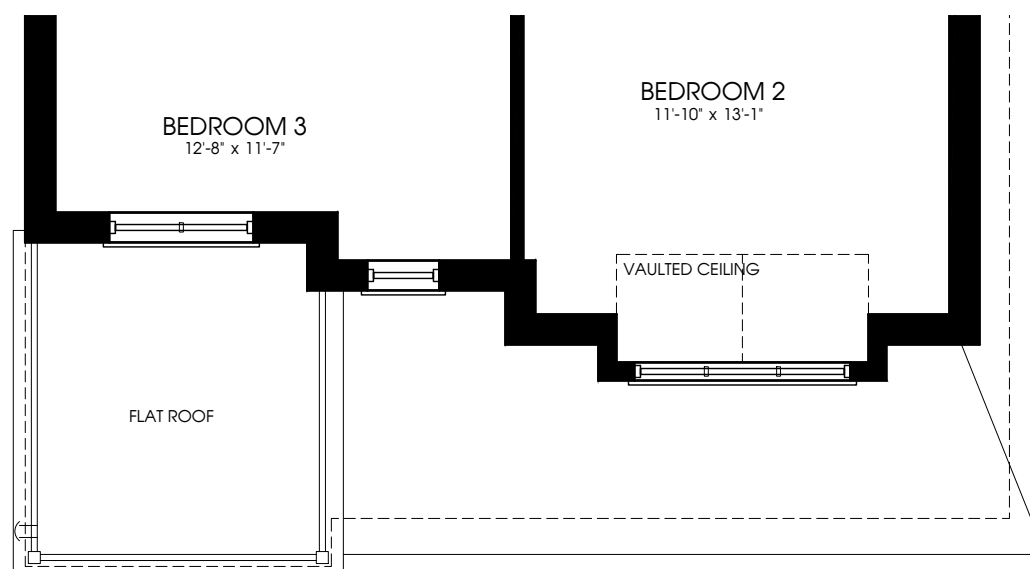
GROUND FLOOR PLAN ELEVATION 'B'

3/16" = 1'-0"



SECOND FLOOR PLAN ELEVATION 'B'

3/16" = 1'-0"



SECOND FLOOR PLAN ELEVATION 'C'

3/16" = 1'-0"



FRONT ELEVATION 'A'

3/16" = 1'-0"



FRONT ELEVATION 'B'

3/16" = 1'-0"



FRONT ELEVATION 'C'

3/16" = 1'-0"